

Pulsowin

New version 3.01

Management of meteorological data

Data capture and correction :

The data can be captured individually or by area. In case of anomaly measurement , the user can copy one or several measurements realized by another weather station.

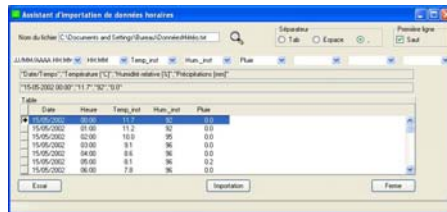
Exchange with other software

Data export

You can export data in the following formats : Excel
Xml , html , MFF,Ascii and Bluesky

Data import

One assistant allows to import most of data recorded in the Ascii format.



More, you can import data in the next formats :
MFF.Acq

Internet

After each calling, Pulsowin can generate automatically html pages to supply an Internet or intranet server.

In using Email application, the exported Ascii data exported can be exported automatically by email.

Application engine

The application engine allows for the user to work in the same environment and the same ergonomics. The application catalogue, in permanent increase, includes besides the computation of temperature sum, the modelling of grape mildew, potatoes late blight, compass card, etc. Detailed sheets specify their operating.

Local network

PULSOWIN possibilities in network allow its operating in network like Ethernet or other. One server station collects data and supplies the database which can be consulted by customer stations.

Requirement:

Windows 2000 *professional* , Windows 2003 Server
XP recommended.

RAM:

Windows 2000 *professional* & XP 512 Mo minimum.

Hard disc: 1 Go minimum available, forecast 20 Mo per station and per year.

Other versions

PULSOWIN exists also in *Junior, Professional and e) Pulsowin* version . Above, the table shows the main differences.

Versions	Stations	Applications	Measurements	Etp	Htmt automatic
Pulsowin	100	10	All	✓	
Junior	1	3	Temperature Humidity Rainfalls Wetness		
Professional	1	10	All	✓	
e)Pulsowin	100	10	All	✓	✓

PULSONIC

48, rue de Versailles
F91400 Orsay

Telephone : +33 (0) 1 64 46 34 10
Telefax: +33 (0) 1 64 46 25 22
Mail : info@pulsonic.net

www.pulsonic.net

